

List of pharmacies in Rotherham

Below is a list of pharmacies in the Rotherham area who are part of the Pharmacy First scheme. Look out for Pharmacy First logo in the window. For more information visit www.rotherhamccg.nhs.uk/pharmacy-first.htm



Archway Pharmacy – Arch 5, Coronation Bridge, Kimberworth Road, S61 1AA

Asda Pharmacy – Asda Superstore, Aldwarke Lane, S65 1SW

Boots Pharmacy – 10-12 Howard Street, Rotherham, S65 1JQ

Boots Pharmacy – Unit 2 Cortonwood, Rotherham, S73 0TB

Boots Pharmacy – 342 Herringthorpe Valley Road, Rotherham, S60 4LA

Co-operative Pharmacy – 22 Park Lane, Thrybergh, S65 4BT

Co-operative Pharmacy – 206 Bawtry Road, Wickersley, S66 1AA

Co-operative Pharmacy – Poplar Glade, Wickersley, S66 2JQ

Co-operative Pharmacy – Sough Hall Avenue, Thorpe Hesley, S61 2QP

Cohens Chemist – 10b Station Street, Treeton, S60 5PN

Dinnington Pharmacy – New Street, Dinnington Surgery, S25 2EZ

Eightlands Pharmacy – High Street Surgery, Rawmarsh, S62 6LW

Good Measure Pharmacy – Unit 18 Alexander Centre, Parkgate, S62 6JE

Heritage Pharmacy – 6 Heritage Court, Rotherham Road, S25 3SA

J. M. McGill Ltd – 37 High Street, Wath-Upon-Deerne, S63 7QB

J. M. McGill Ltd – 65 Knollbeck Lane, Rotherham, S73 0TW

Lloyds Pharmacy – 45C Rawmarsh Hill, Rotherham, S62 6DP

Lloyds Pharmacy – Kimberworth Park MC, Rotherham, S61 3JL

Lloyds Pharmacy – Eden House, Rotherham, S65 4HH

Lloyds Pharmacy – 19-21 Kimberworth Road, Rotherham, S61 1AB

Lloyds Pharmacy – 1 Fenton Road, Greasbrough, S61 4RD

Lloyds Pharmacy – 9 Central Parade, Badsley Moor Lane, S65 2QN

Lloyds Pharmacy – New Street, Dinnington, S25 2EX

Lloyds Pharmacy – 31-33 Laughton Rd, Dinnington, S25 2PN

Lloyds Pharmacy – 65 Green Arbour Road, Thurcroft, S66 9DD

Lloyds Pharmacy – 239 Doncaster Road, S65 2DE

Lloyds Pharmacy – 99 Wales Road, Kiveton Park, S26 6RA

Lloyds Pharmacy – Aston Cum Aughton Centre, Aston, S26 4WD

Lloyds Pharmacy – 7-8 The Square, Wales, S26 5QN

Maltby Pharmacy – 8 Blyth Road Medical Centre, Rotherham, S66 8JD

MedicX Pharmacy Ltd – NHS Rotherham Community Health Centre, Greasbrough Road, S60 1RY

Morrisons Pharmacy – Cortonwood retail park, Rotherham, S73 0TB

North Anston Pharmacy – 14 Quarry Lane, North Anston, S25 4DB

Rotherchem – 255 Canklow Road, Rotherham, S60 2JH

South Anston – 13 Sheffield Road, Rotherham, S25 5DT

Swallownest Pharmacy – 31/33 High Street, Swallownest, S26 4TT

Thurcroft Pharmacy – The Village Surgery, 24-28a Laughton Road, S66 9LP

Vantage Pharmacy – 5 The Shopping Centre, Rotherham, S62 6NG

Weldricks Pharmacy – 1a Church Street, Swinton, S64 8QA

Weldricks Pharmacy – 52 Claypit Lane, Rawmarsh, S62 5HD

Weldricks Pharmacy – 27 Brinsworth Lane, Brinsworth, S60 5BS

Weldricks Pharmacy – Maltby Services Centre, Braithwell Road, S66 8JE

Weldricks Pharmacy – 6 The Parade, Thorogate, S62 7HX

Weldricks Pharmacy – 94a High Street, Maltby, S66 7BN

Weldricks Pharmacy – 3 Laburnum Parade, Maltby, S66 8DP

Weldricks Pharmacy – 26 Main Street, Catcliffe, S60 5SR

Weldricks Pharmacy – 17 Crown Street, Swinton, S64 8NB

Whitworths Pharmacy – 70A Broom Lane, Rotherham, S60 3EW

Whitworths Pharmacy – 108 Broom Valley Road, Rotherham, S60 2QY

Wickersley Pharmacy – Morthen Road – Rotherham, S66 1EU

Winterhill Pharmacy – 2 Fellowsfield Way, Kimberworth, S61 1NL

Choosing the right care, first time



A guide to help you choose the care you need in Rotherham.

Getting the right care, first time ensures you receive the best possible treatment, leaving health services free for those who need them most.

Health services are very busy at the moment. Help us to help those most in need. Follow these steps to use the right treatment:

Self care

You can treat most common ailments and illnesses at home by keeping a well-stocked medicine cabinet. This should include:

- **Pain relief** e.g. paracetamol or ibuprofen
- **Children's paracetamol oral suspension and ibuprofen syrups** – free from pharmacy if you receive free prescriptions.
- **Mild laxatives** to relieve constipation.
- **Cold relief products.**
- **Rehydration mixtures** to use if feeling dehydrated after a bout of sickness or diarrhoea.
- **Indigestion remedy.**
- **A range of bandages, plasters, non-absorbent cotton wool, elastic bandages and dressings** for minor cuts, sprains and bruises.



Pharmacy first

Many pharmacies are open early until late and on weekends and bank holidays. You don't need an appointment, and can just pop in and get expert medical help from a qualified healthcare professional. Most pharmacies now have a private consultation area where you can discuss your issues and concerns without being overheard.

Pharmacy First

Many of Rotherham GPs and community pharmacies are part of the Pharmacy First scheme which enables you to get medication direct from the pharmacist without a prescription. Plus if you don't normally pay prescription charges you can get medicine supplied under the scheme FREE OF CHARGE.

For a list of pharmacies in the scheme visit:
www.rotherhamccg.nhs.uk/pharmacy-first.htm



Look out for the Pharmacy First badge in a pharmacy near you

Children

All children get colds. This is a normal part of growing up and no medicines can prevent them. The best way to look after your child is to make sure they have plenty to drink and if they have a temperature some paracetamol will help. Most doctors don't recommend cough medicines and antibiotics won't help a cold.



NHS 111

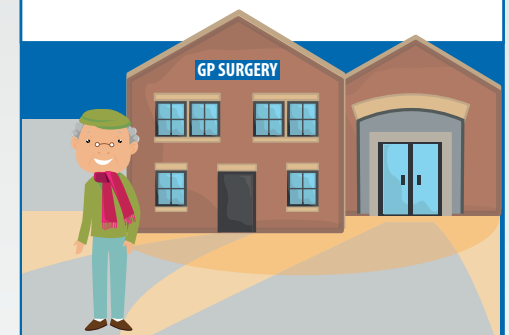
NHS 111 offers confidential health advice and information by telephone.

Ring 111 if you are ill and have questions about your health and where to get treatment.



GP surgeries

Make an appointment with your local GP if you have an illness or injury that will not go away.



For more information and health advice visit the NHS Choices website:
www.nhs.uk